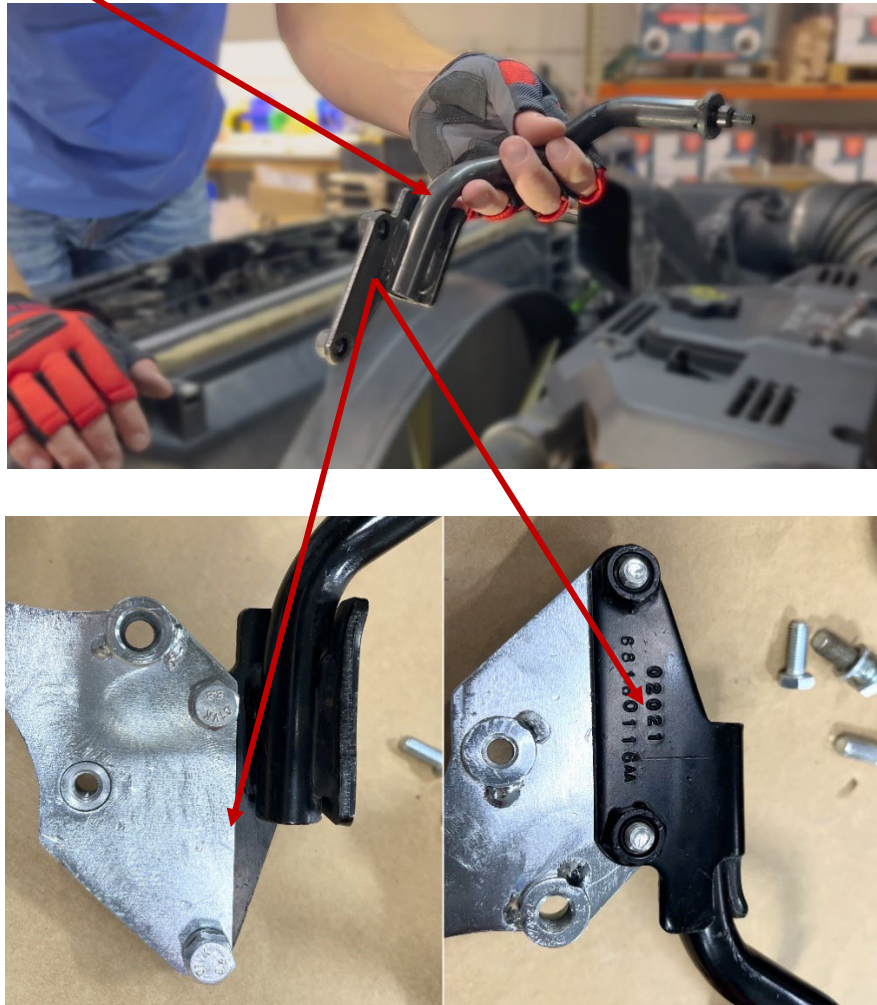


RAM LHG Kit #405 - Special instructions ADDENDUM

During the installation process, it is necessary to remove the “Fan Shroud Bracket/Stator” (Manual page 14)...



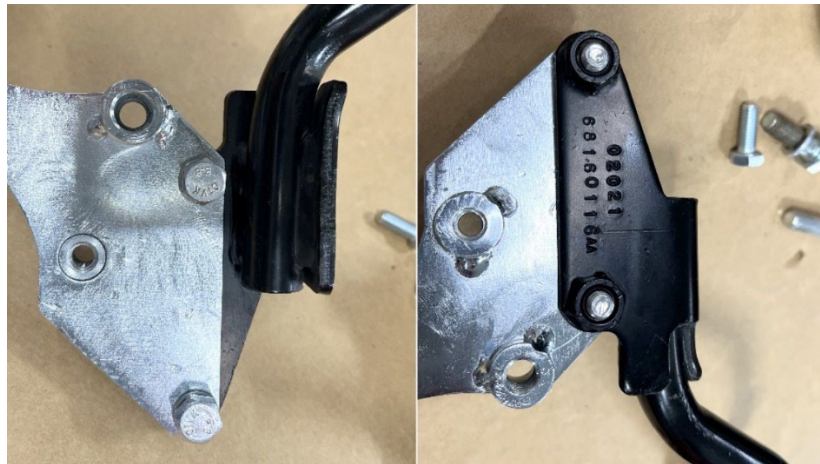
and reattach it to a location on the LHG Mounting Bracket (Manual page 21) as illustrated above (your LHG bracket may be black).

We have found that, on some installations, the weld shown here will be too large to allow the mounting threads on the Fan Shroud Bracket/Stator to line up properly with the holes on the LHG Mounting Bracket and the two parts to join correctly.



To overcome this situation:

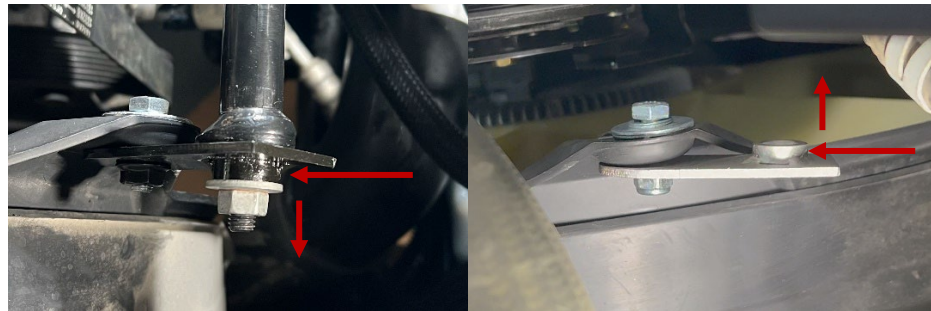
1. As soon as you remove the Shroud Bracket/Stator (Manual page 14), locate the LHG Back Bracket (10-0577) and the two M8 Hex HD Bolts (920-0010).
2. On the bench, use the bolts to attach the Shroud Bracket/Stator to the LHG Back Bracket, as shown below.



3. Verify that the two brackets align properly, the bolts thread and finger tighten easily, and the weld shown above does not interfere with the two brackets resting flatly against each other.

If there are no problems with fitment, disconnect the two brackets and proceed with the installation as described in the Installation Manual.

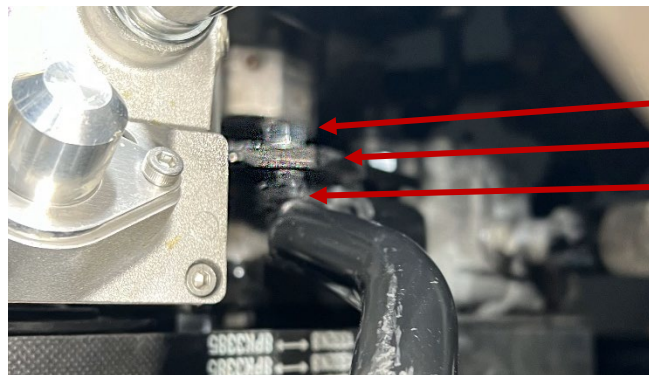
4. ONLY if the brackets DO NOT ALIGN and fit together easily, that is, if the weld gets in the way of proper fitment, detach the brackets and proceed with the installation as described in the Manual up to Section 6.4 on page 20.
5. At Section 6.4 step 19 flip the orientation of the Stator Offset Tab (14-0587) to match the one shown below LEFT. Notice how the offset bushing is in the opposite direction from the Install Manual illustration shown below right.



Do this

Not this

6. Next, Attach the other end of the Shroud Bracket/Stator to the FRONT of the LHG Mounting Bracket (as shown below), rather than the back of the LHG Mounting Bracket, inserting the bolts from the BACK instead of the front.



Bolt Head

LHG Mounting Bracket

Shroud Bracket/Stator

This solution will allow the Shroud Bracket/Stator to fit securely to the LHG Mounting Bracket, maintain the proper angle, and connect to the Stator Offset Tab at the proper distance from the engine, holding the Fan Shroud appropriately.

NOTE: Don't apply the above solution to the Shroud Bracket/Stator if the fitment is not compromised as described in step 3 above.

The brackets you have been supplied with will be different from the brackets in the installation guide. When building and mounting the bracket assembly, please use the instructions below.

The New Brackets will look different...



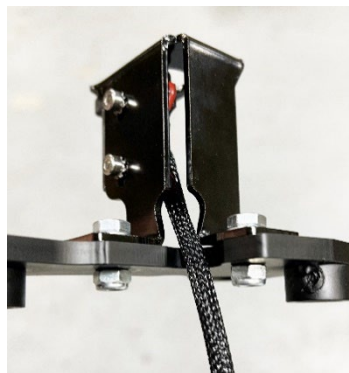
The brackets in the instructions will look like the picture above.

The new brackets will look like the pictures below.



In your kit, the idler pulley MAY already be mounted to the bracket.

You may have been supplied with additional hardware: two small washers and two small lock nuts, or two lock washers and nuts. Use these to attach the RPM sensor to the top bracket, as shown below. Do not set the sensor gap at this point.

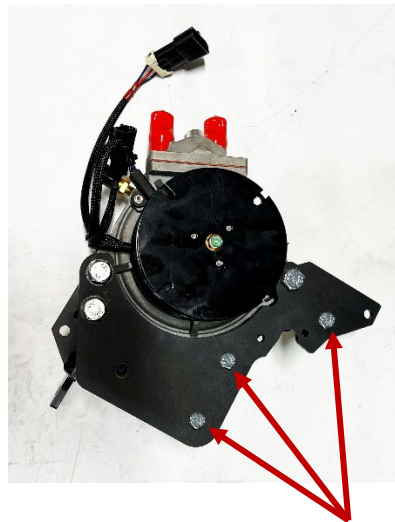


When it is time to install the LHG Assembly on the engine, follow the steps in order as shown below:



Note that the Pulley and RPM sensor have been removed from these pictures for clarity. Make sure the Pulley and Sensor ARE INSTALLED on the bracket before installing it in the engine.

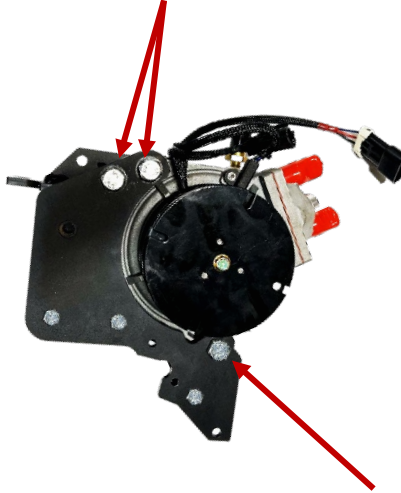
1. Make sure these **three bolts** on the LHG Assembly are slightly loose to allow for play between the front and back brackets.



Note that the Pulley and RPM sensor have been removed from these pictures for clarity. Make sure the Pulley and Sensor ARE INSTALLED on the bracket before installing it in the engine.

2. **Install the bracket on the engine** and add the **three mounting bolts**.
3. Finger-tighten/snug the three mounting bolts that attach the bracket to the engine, but torque these bolts LAST.

4. Tighten and torque the **two TOP bolts** on the bracket.



Note that the Pulley and RPM sensor have been removed from these pictures for clarity. Make sure the Pulley and Sensor ARE INSTALLED on the bracket before installing it in the engine.

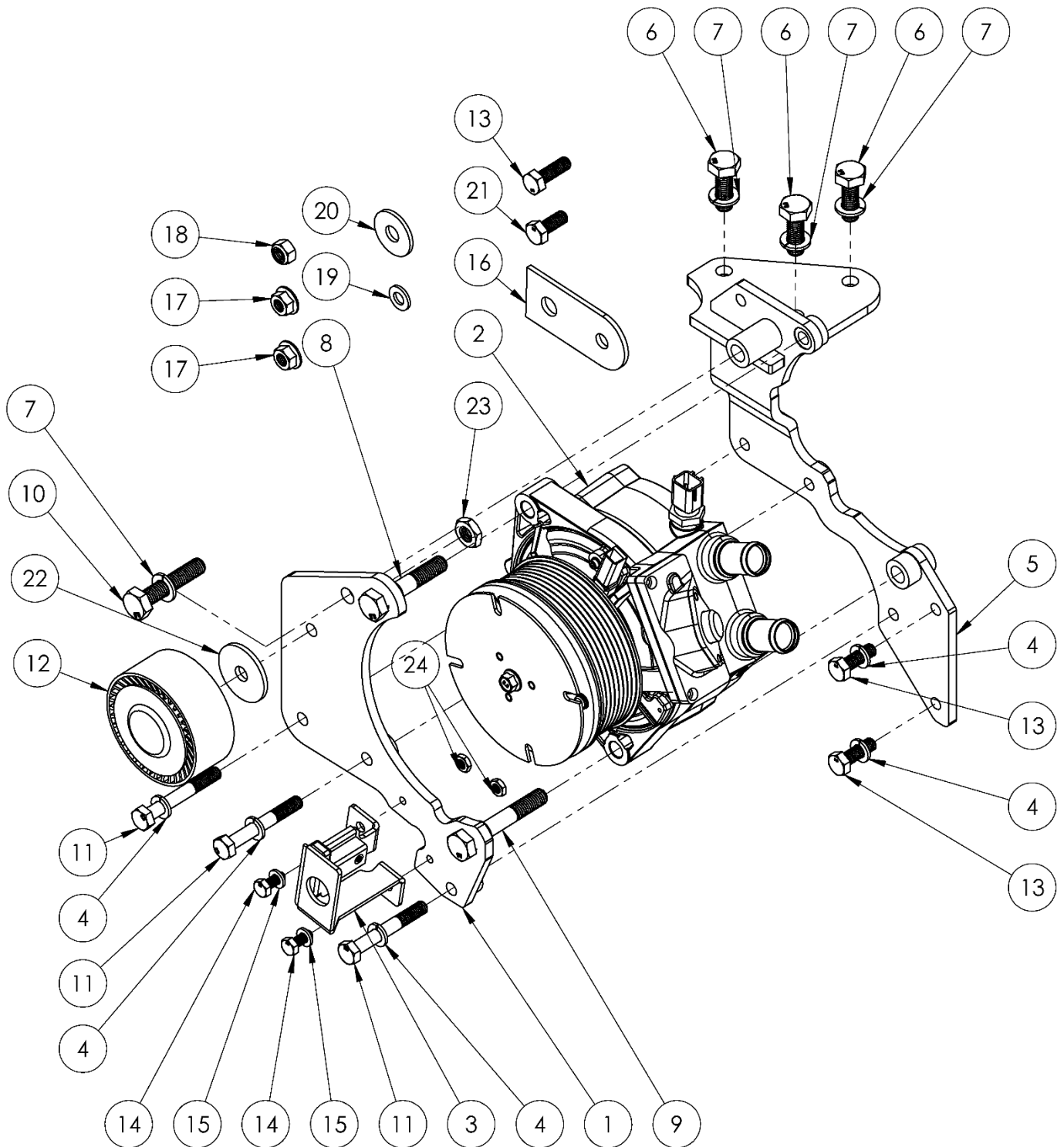
5. Tighten and torque **the remaining LHG mounting bolt**.
6. Now tighten the mounting bolts from step 2.
7. Adjust the RPM sensor distance to the distance specified in the manual.

Kit 405 2019 - 2023 Dodge RAM 6.7L Cummins Kit

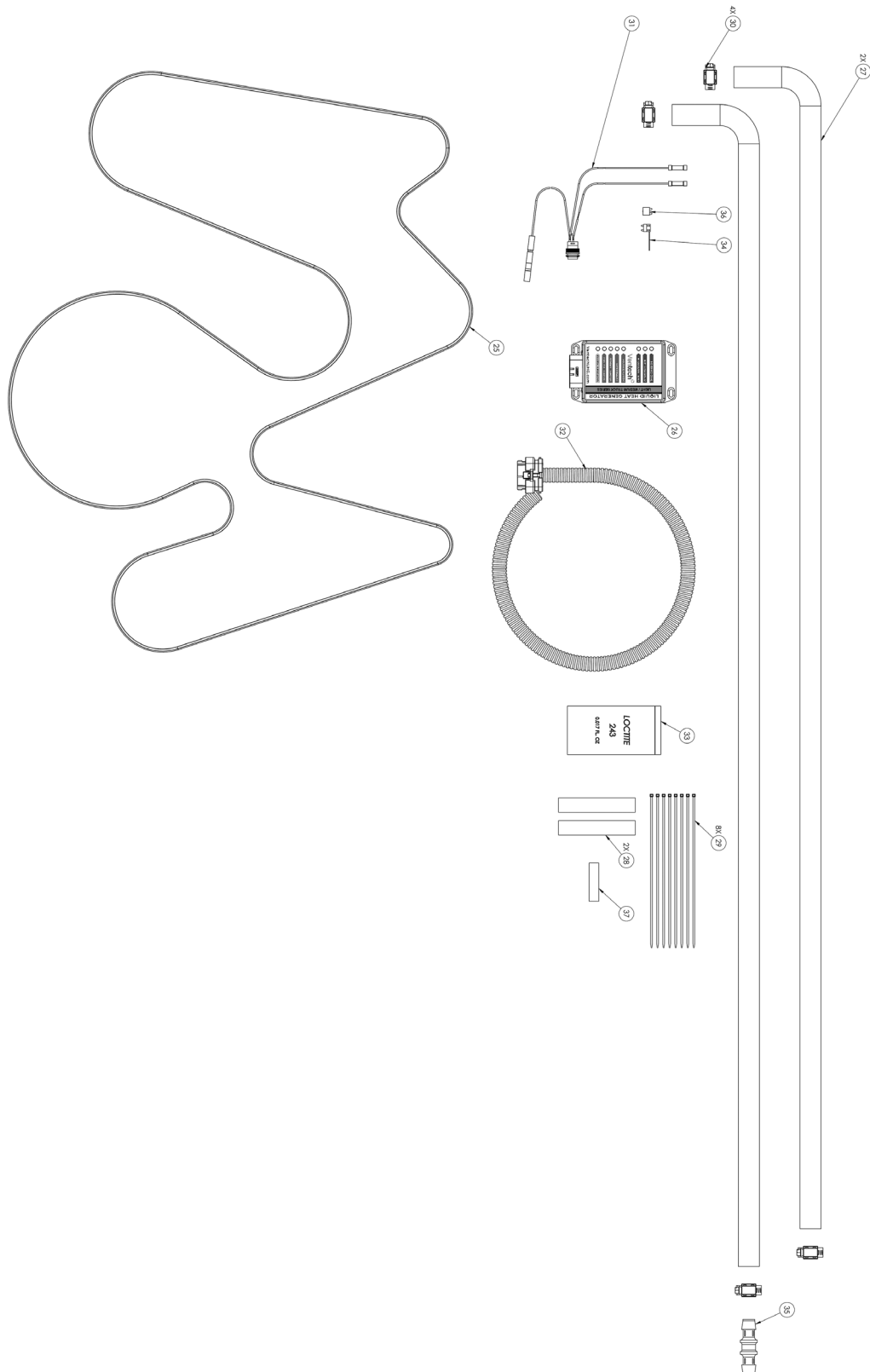
Changes have been made in the materials/hardware used in Kit 405. These changes have been applied to more recently assembled/manufactured kits, while previously assembled kits will retain the earlier materials. These changes do not affect the system's functionality but may cause confusion when reviewing the kit's contents.

For this reason, we have updated the exploded kit contents diagrams found in the manual and included the earlier versions here in the following pages of this addendum.

Again, the fit and functionality of the kit will remain the same. If, however, you have any problems with fit or functionality during installation, **DON'T MAKE THINGS FIT!** Pause your installation and contact us immediately by phone or email.



BILL OF MATERIALS			
ITEM NO.	PART NUMBER	DESCRIPTION	QTY.
1	14-0576	KIT 405 - FRONT BRACKET WELDMENT	1
2	LHG700 DSS 58	LHG700 5/8 PORTS DUAL SPEED SENSOR	1
3	140-0155	LHG700/800 ROTOR RPM BRACKET ASS'Y (STANDARD)	1
4	925-0012	M8 LOCK WASHER	5
5	14-0577	KIT 405 - BACK BRACKET	1
6	920-0020	M10-1.5 X 30 HHS 8.8 ZP	3
7	925-0016	M10 LOCK WASHER - ZINC PLATED	4
8	920-0012	M10-1.5 X 55 HHS 8.8 ZP	1
9	920-0191	M10-1.50 X 65 HEX HD BOLT - 8.8 -ZINC PLATED	1
10	920-0011	M10-1.5 X 50 HHS 8.8 ZP	1
11	920-0134	M8-1.25 X 60 HEX HD BOLT - 8.8 - ZINC PLATED	3
12	14-0575	KIT 405 - 75MM IDLER PULLEY (DAYCO 89589)	1
13	920-0010	M8-1.25 X 25 HHS 8.8 ZP	3
14	920-0268	M6-1.0 X 15 HEX HEAD BOLT - 8.8 - ZINC PLATED	2
15	925-0020	M6 LOCK WASHER	2
16	14-0582	KIT 405 - DODGE RAM KIT - STATOR OFFSET TAB WELDMENT	1
17	920-0257	M8-1.25 SERRATED FLANGE HEAD NUT - CLASS 8 - ZINC PLATED	2
18	920-0031	M8-1.25 X 8H NYLOC NUT 8 ZP	1
19	925-0002	M8 FLAT WASHER	1
20	925-0031	M10 OVERSIZED WASHER - ZINC PLATED	1
21	920-0009	M8-1.25 X 20 HHS 8.8 ZP	1
22	926-0018	SHIM 1.5" OD X .39" ID X 0.118" THICK	1
23	920-0271	M10-1.5 THIN HEX NUT - ZINC PLATED	1
24	920-0270	M6-1.0 THIN HEX NUT - ZINC PLATED	2



BILL OF MATERIALS			
ITEM NO.	PART NUMBER	DESCRIPTION	QTY.
25	980-0083	SERPENTINE BELT, 8 RIB, 133.1" (GOODYEAR 1081331)	1
26	135-0041	ENHANCED DELUXE ECU, LIGHT/MEDIUM TRUCK	1
27	990-0108	5/8" HEATER HOSE W/ 90 DEG. ELBOW, 4" X 60"	2
28	926-0021	VELCRO STRIPS 4" X 3/4"	2
29	990-0002	TIE WRAP, 8"	8
30	990-0093	SAE #12 WORM DRIVE HOSE CLAMP	4
31	135-0042	SWITCH ASSEMBLY, W/ PIGTAIL	1
32	130-0049	DELUXE ECU HARNESS ASSY, DUAL RPM SENSOR	1
33	990-0012	LOC-TITE 243 .017 FL. OZ (BLUE)	1
34	95-0060	FUSE TAP, ATR, 10A MAX	1
35	990-0091	5/8 HOSE ADAPTOR / CONNECTOR	1
36	96-0034	ATR-5 AUTOMOTIVE ATR FUSE, 5A, 32VDC	1
37	926-0023	RPM SENSOR GAUGE STRIP 2" X .5" X .020"	1

END OF ADDENDUM.